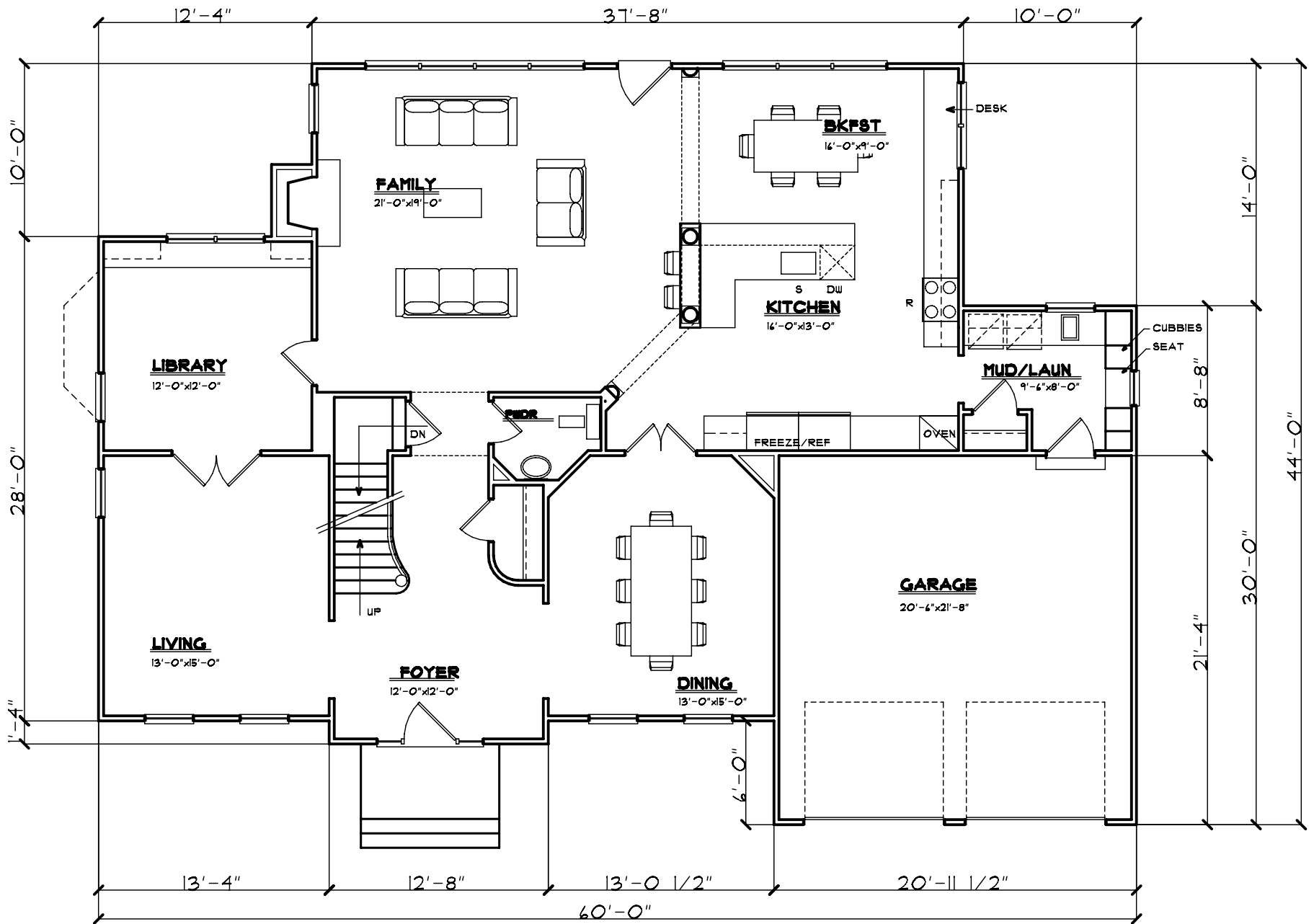

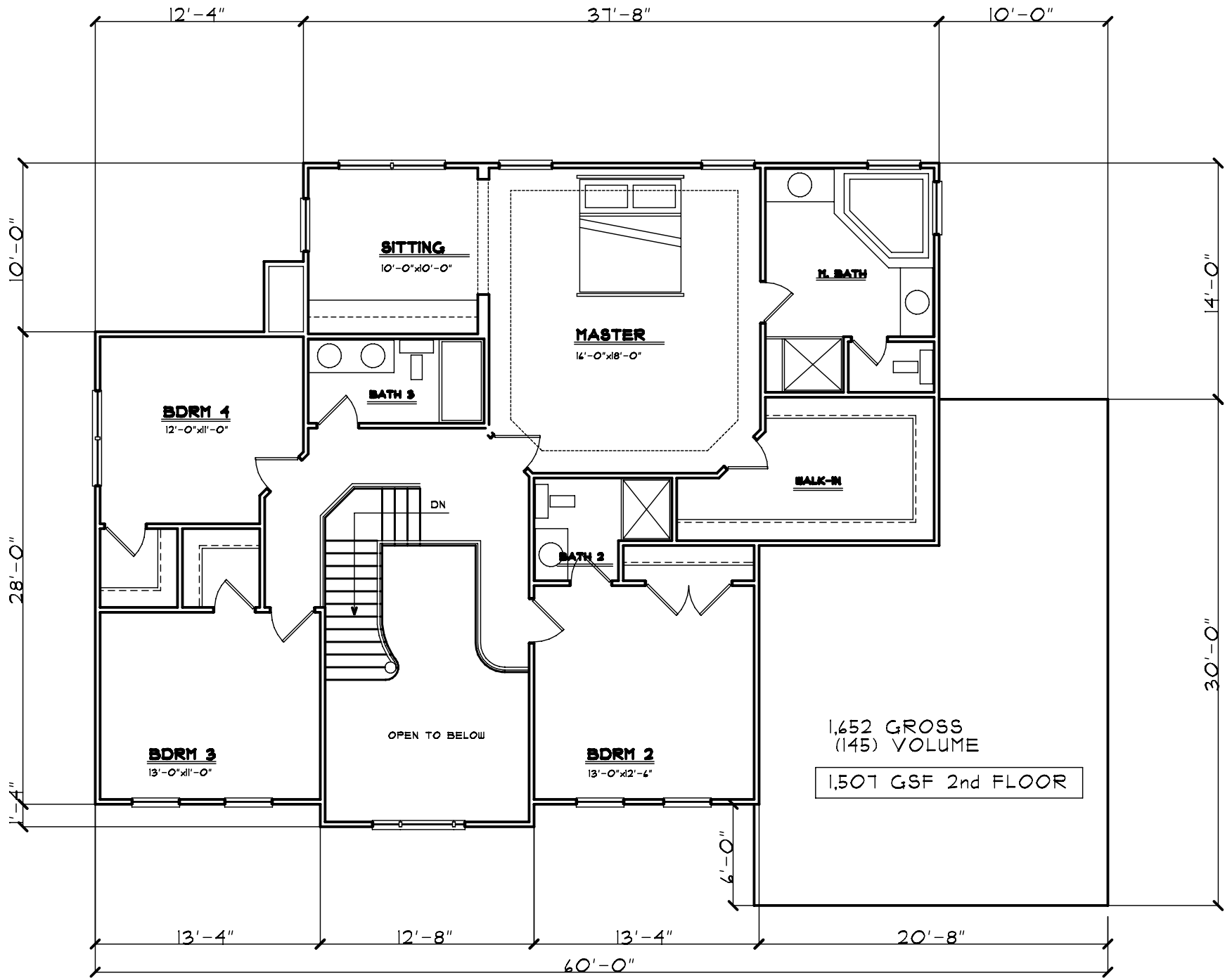


○ BASEMENT/FOUNDATION PLAN




**FIRST FLOOR PLAN - 8/12/10**  
**3,224 GSF TOTAL**  
 BOBUD AT ETHEL'S POND - UNIT 'C'  
 RAST ARCHITECTURAL STUDIO, INC.

444 GARAGE  
 1,717 GSF 1st FLOOR



**SECOND FLOOR PLAN**

BOBUD AT ETHEL'S POND - UNIT 'C'  
 RAST ARCHITECTURAL STUDIO, INC.



○ FRONT ELEVATION

1/4"=1'-0"